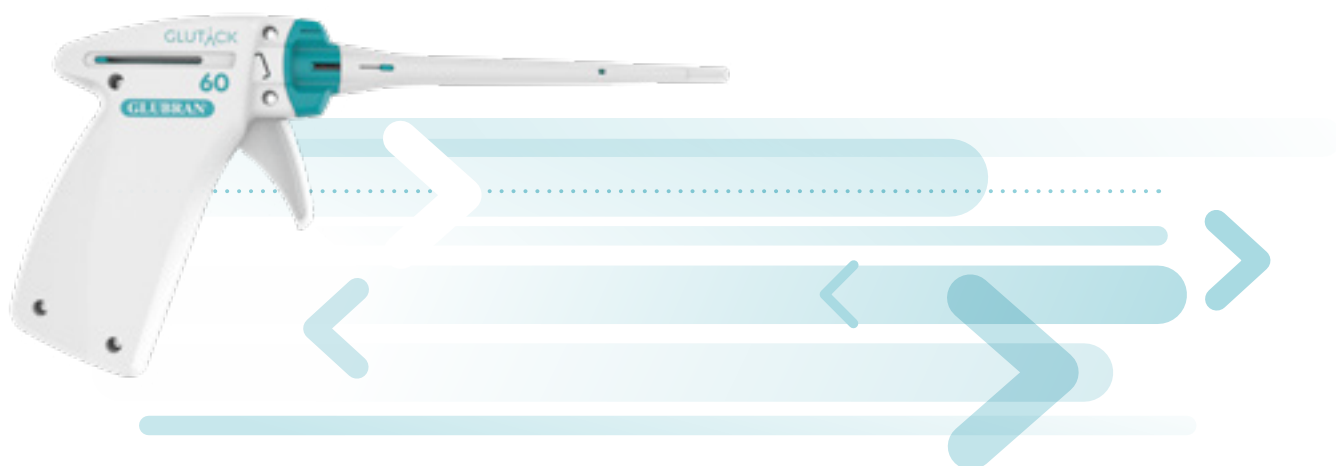


GLUTÄCK®



**For the
controlled
release of
Glubran® 2**



GLUBRAN²



GEM SOLUTION
COMES FROM
EVOLUTION



**Suitable for
laparoscopic
and laparotomic
minimally invasive
fixation surgery.**



SAFE

- Glue dispensing constantly under control ²⁴
- Tip designed to be non-adhesive and non-obstructable throughout surgery ²⁴



QUICK ²⁴

- Ultra-fast preparation
- Fast, controlled dispensing



INTUITIVE ²⁴

- Simple and ergonomic “place, point and squeeze” design
- The geometry of the handpiece makes for greater comfort for the surgeon
- A light pressure with immediate release of the trigger is sufficient to deliver a drop of Glubran[®] 2
- Visual indicators confirm the release of Glutack[®] and the remaining number of drops to be dispensed
- The swivelling end of the laparoscopic model allows application perpendicular to the prosthesis and abdominal wall



ACCURATE ²⁴

- Volume of each drop dispensed ~ = 0,0125 ml/drop
- No waste



VERSATILE ²⁴

- Available in 2 different formats: Glutack[®] 30 or 60 drops, depending on the size of the prosthesis and/or surgical requirements
- Laparoscopic Glutack[®] with articulated end to reach the most difficult areas

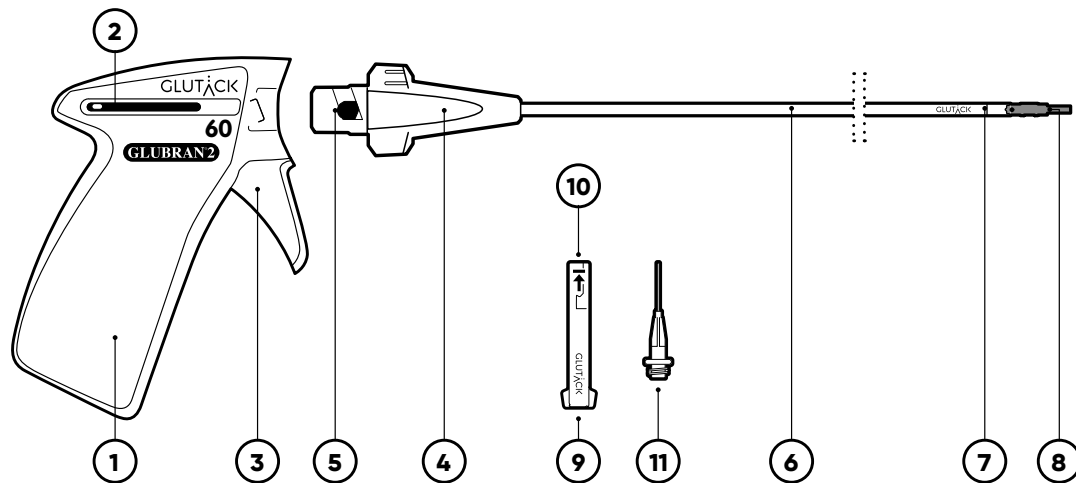


FLEXIBLE ²⁴

In laparoscopic surgery it allows:

- Varied access angles thanks to the swivelling end
- Fixation from any angle
- Elimination of contralateral access





The sterile, latex-free, single-use device consists of the following components:

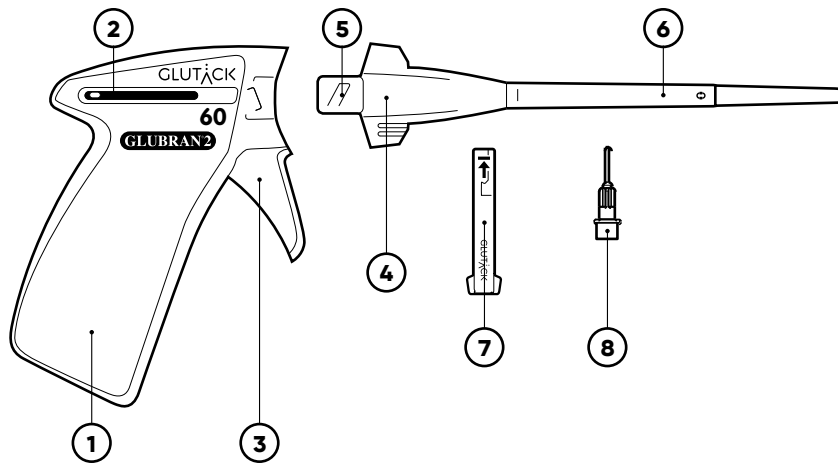
- Handpiece (1) with label indicating the quantity of drops that can be dispensed; fitted with cursor (2), which reveals the quantity of Glubran® 2 dispensed during the procedure, and trigger (3) for calibrated drop dispensing.
- Rigid catheter (5 mm external diameter) consisting of:
 - mounting base (4) with the symbol showing the mounting direction (5) and cartridge chamber (6);
 - steel rod (7);

- articulated, swivelling end (8), anti-adhesive and non-obstructable tip (9).

- Filling cartridge for Glubran® 2 (10).
- Transfer tip for loading the cartridge with Glubran® 2 (11).

Please read the instructions for use in the leaflet (IFU) carefully.





The sterile, latex-free, single-use device consists of the following components:

- Handpiece (1) with label indicating the quantity of drops that can be dispensed; fitted with cursor (2), which reveals the quantity of Glubran® 2 dispensed during the procedure, and trigger (3) for calibrated drop dispensing.
- Catheter consisting of:
 - mounting base (4) and cartridge chamber (5);
 - polyethylene rod (6);
- Transparent, plastic filling cartridge for Glubran® 2 (7), premarked with

symbols indicating the direction of introduction into the chamber and the loading level (8).

- Transfer tip for loading the cartridge with Glubran® 2 (8).

Please read the instructions for use in the leaflet (IFU) carefully.



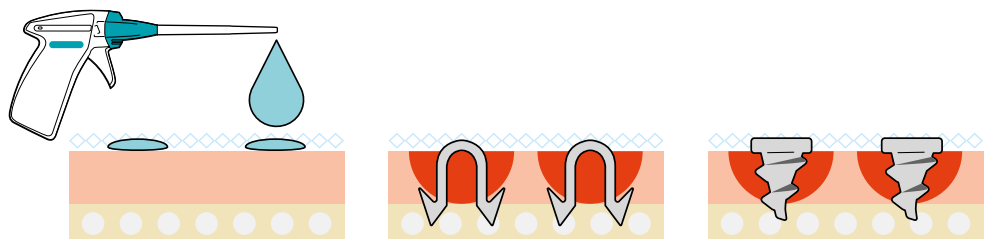
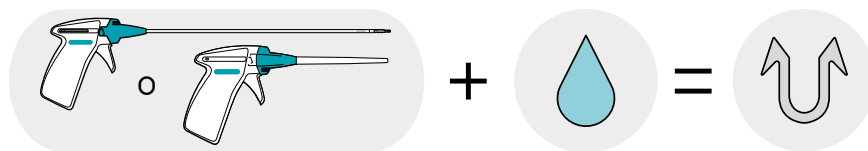


Further evolution.

For the controlled application of **Glubran® 2** in laparoscopic and laparotomic surgery.¹⁻²⁹

Suitable for fixation of prostheses in minimally invasive hernia surgery performed under laparotomy or laparoscopy. With each squeeze of the trigger, one drop of Glubran® 2 surgical glue is released.²⁴

- **One drop delivered with each slight pressure and immediate release of the trigger**



- **Safety for the patient^{1,2,6,8} and ease of application for the surgeon¹**

GLUBRAN²

The gentle power of a drop.



TOWARDS



Versatile, Multipurpose.



Glubran® 2 = 1 highly adhesive fixation



GLUBRAN® 2

Synthetic biodegradable cyanoacrylate-based synthetic glue ¹¹, modified with the addition of a monomer synthesised by GEM.

It polymerises rapidly in contact with tissue and in a humid environment ⁸, creating a thin elastic film ¹² with high tensile strength, which guarantees firm adhesion to the tissue ^{10,13}.

Ready to use ¹⁴⁻¹⁶, highly adhesive, with sealing, haemostatic ¹⁷ and bacteriostatic properties. Forms an effective antiseptic barrier against the most common pathogens and infectious agents ^{11,18,19}.

Class III medical device authorised since 1998 for endovascular use and in laparoscopic and laparotomic surgery ²⁰.



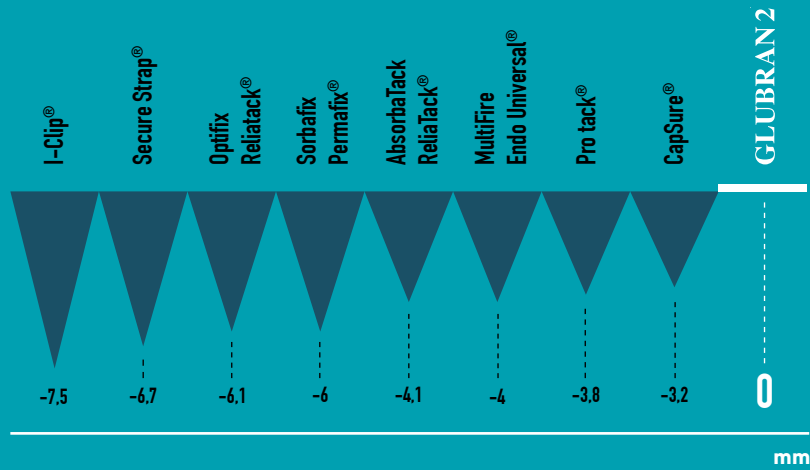
> G-NB2-50



> G-NB2

GLUBRAN²

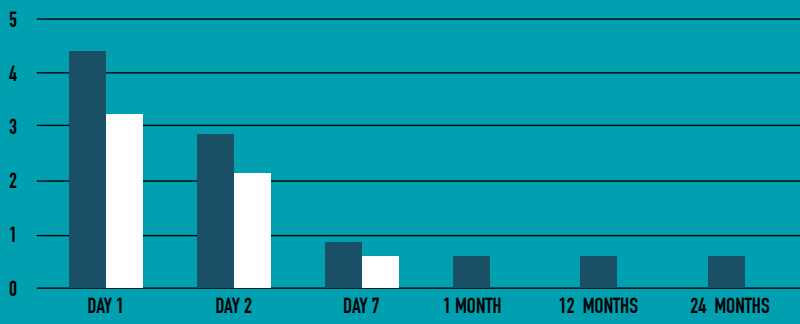
ATRAUMATIC



(Fig.1)

TISSUE PENETRATION (mm)^{21, 30}

LESS PAIN



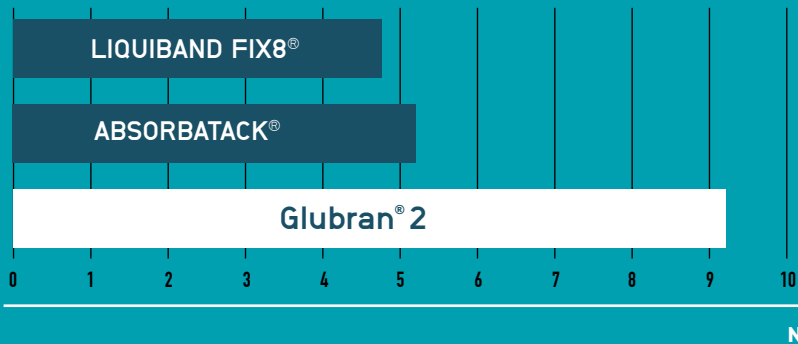
(Fig.2)

CLIP
 GLUBRAN[®]

POST-OPERATIVE PAIN INTENSITY EVALUATION ON VAS SCALE⁶
 (modified from Burza A. et al. 2014).

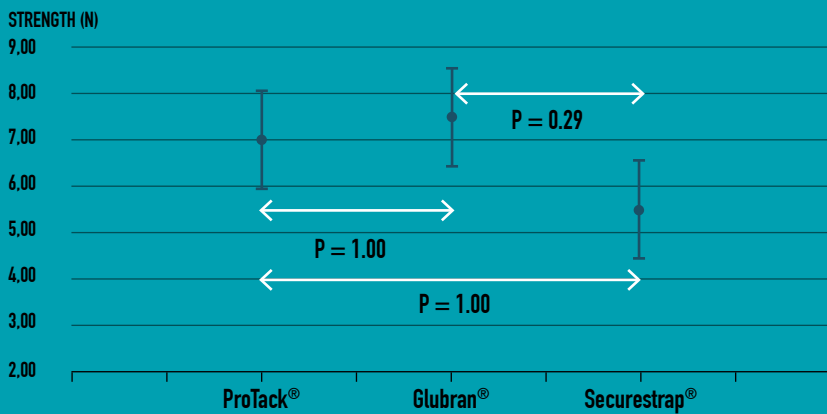


TENSILE STRENGTH



(Fig.3)
**PRECLINICAL ASSESSMENT OF
 IN VITRO TENSILE STRENGTH IN
 DYNAMESH-PP¹³ FIXATION.**

STRENGTH OF REGROWN TISSUE AT 12 MONTHS

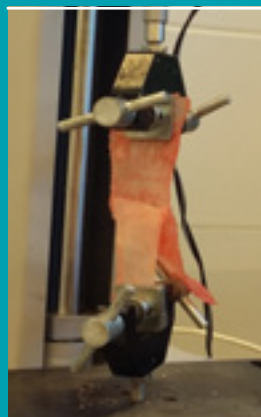


(Fig.4)
modified by Harsløf S. et al. 2017¹⁰.

STRENGTH TEST^{13,22}



TENSILE STRENGTH 9N/CM²
 (a)

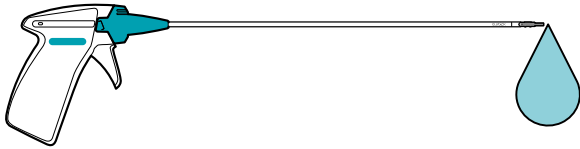


ADHESIVE STRENGTH 6N/CM²
 (b)

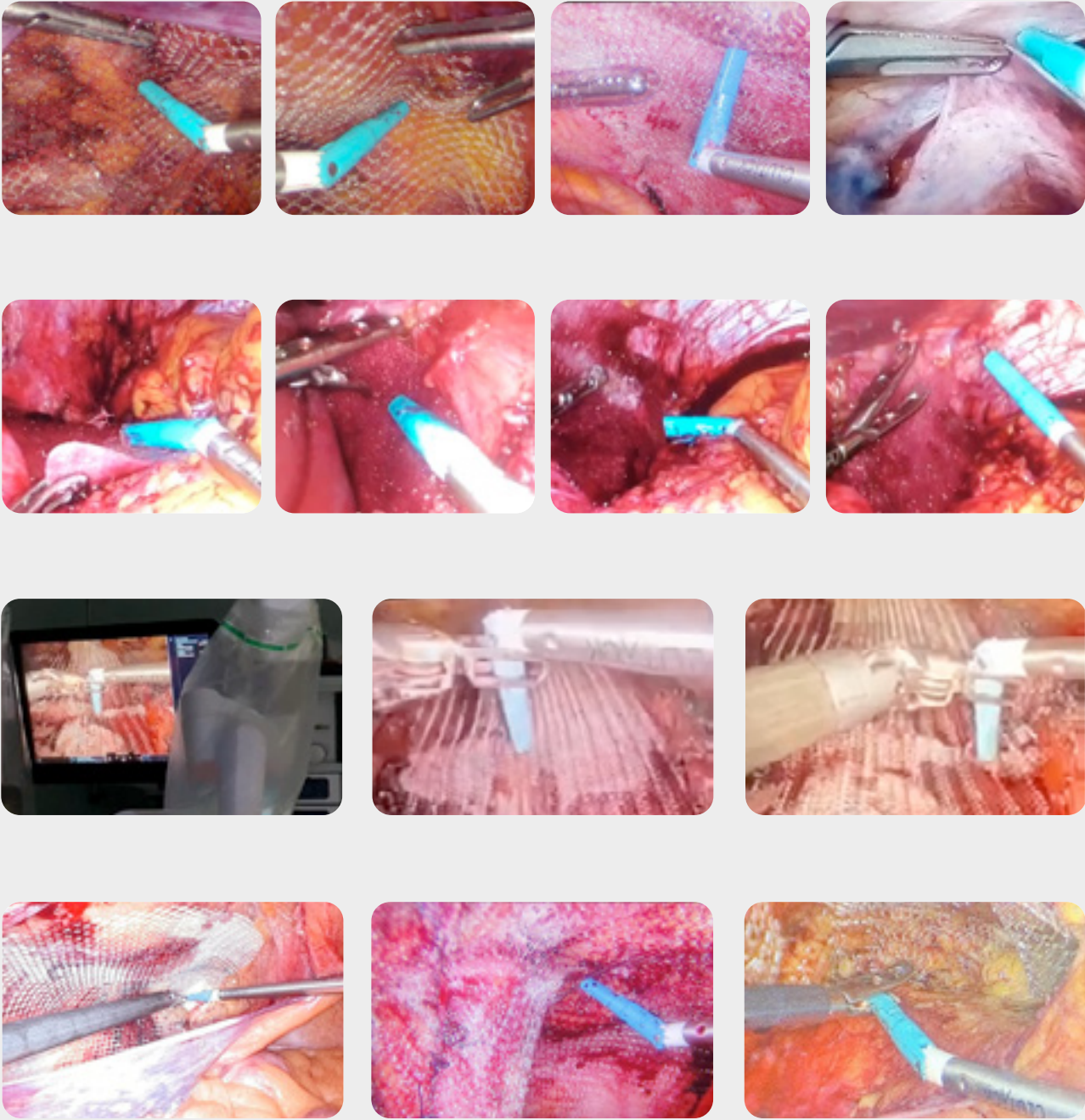
(Fig.5a/5b)

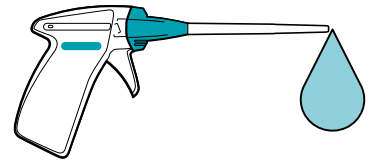
Fact-based efficacy.

Laparoscopy



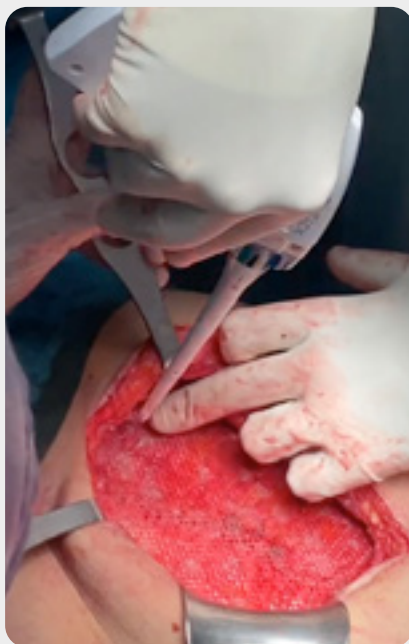
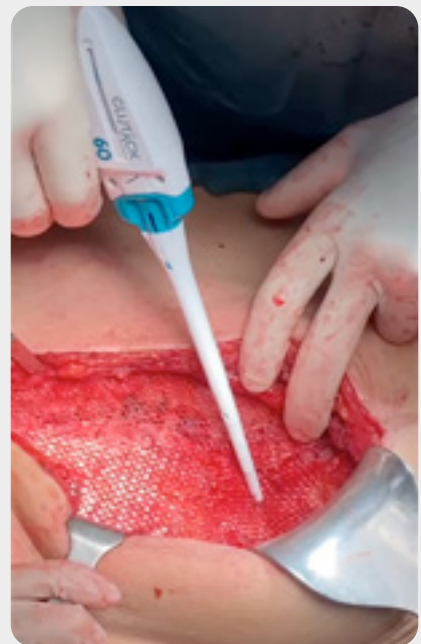
Repair of inguinal, hiatal, ventral hernias and laparocoeles





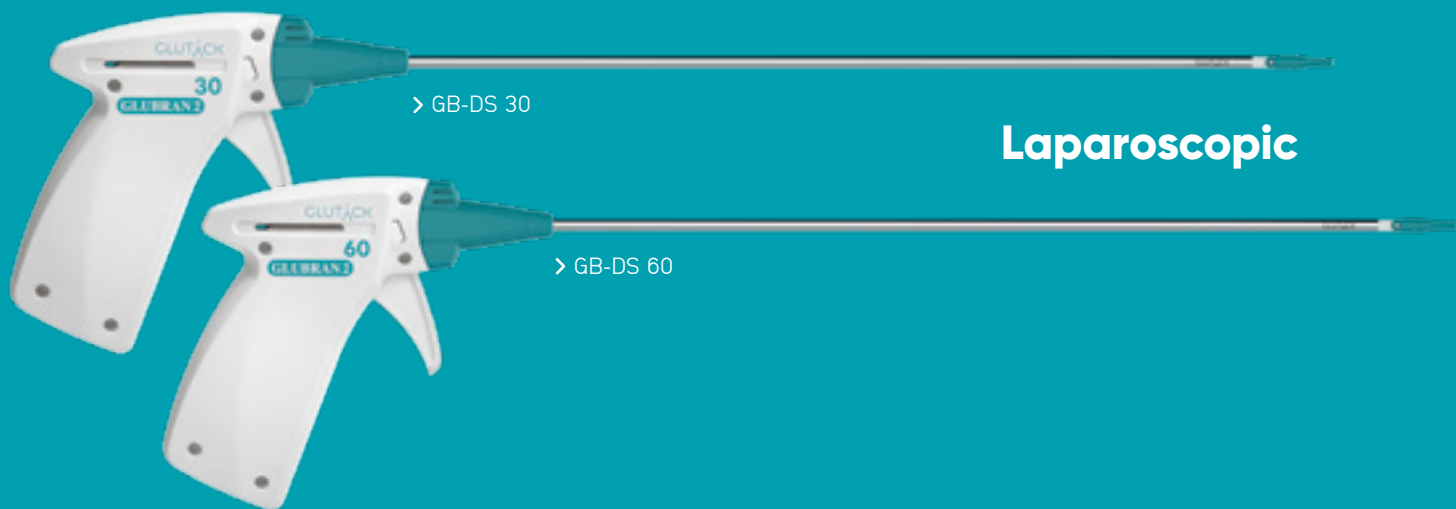
Laparotomy

Ventral Hernias



GLUTÄCK®

For every single need in abdominal wall surgery.



> GB-DS 30

> GB-DS 60

Laparoscopic



> GB-DS SH 30

> GB-DS SH 60

Laparotomic

Available in 2 different formats: 30 or 60 drops, suitable for different mesh sizes and repair procedures.

Bibliography

1. Kukleta JF, Freytag C, Weber M. Efficiency and safety of mesh fixation in laparoscopic inguinal hernia repair using n-butyl cyanoacrylate: long-term biocompatibility in over 1,300 mesh fixations. *Hernia*. 2012 Apr;16(2):153-62.
2. Testini M, Lissidini G, Poli E, Gurrado A, Lardo D, Piccinni G. A single-surgeon randomized trial comparing sutures, N-butyl-2-cyanoacrylate and human fibrin glue for mesh fixation during primary inguinal hernia repair. *Can J Surg*. 2010 Jun;53(3):155-60.
3. Grasso G., Florio G., Mari A., Del Papa M., Carni D.. Trattamento dell'ernia inguinale con procedura IPPM (intraperitoneal polyvinylidene fluoride polypropylene mesh): tecnica personale. *Osp. Ital Chir*. Luglio Settembre 2010.
4. Paajanen H, Kössi J, Silvasti S, Hulmi T, Hakala T. Randomized clinical trial of tissue glue versus absorbable sutures for mesh fixation in local anaesthetic Lichtenstein hernia repair. *Br J Surg*. 2011 Sep;98(9):1245-51.
5. Ladurner R, Drosse I, Seitz S, Plitz W, Barbaryka G, Siebeck M, Bürklein D, Kirchhoff C, Buhman S, Mutschler W, Schieker M, Mussack T. Tissue attachment strength and adhesion formation of intraabdominal fixed meshes with cyanoacrylate glues. *Eur J Med Res*. 2008 May;13(5): 185-91
6. Burza A, Avantiori R, Curinga R, Santini E, Delle Site P, Stipa F. Comparison between two different mesh fixation methods in laparoscopic inguinal hernia repair: tacker vs. Synthetic cyanoacrylate glue. *Minerva Chir*. 2014 Dec;69(6):321-329.
7. Eldabe Mikhail A, Palomo Luquero A, Reoyo Pascual JF, Seco Gil JL. Prosthetic material fixation in open inguinal hernioplasty: suture vs. synthetic glue. *Cir Esp*. 2012 Aug-Sep;90(7):446-52.
8. Losi P, Burchielli S, Spiller D, Finotti V, Kull S, Briganti E, Soldani G. Cyanoacrylate surgical glue as an alternative to suture threads for mesh fixation in hernia repair. *J Surg Res*. 2010 Oct;163(2):e53-8.
9. Harsløf S, Krum-Møller P, Sommer T, Zinther N, Wara P, Friis-Andersen H. Effect of fixation devices on postoperative pain after laparoscopic ventral hernia repair: a randomized clinical trial of permanent tacks, absorbable tacks, and synthetic glue. *Langenbecks Arch Surg*. 2018 Jun;403(4):529-537.
10. Harsløf S, Zinther N, Harslof T et al (2017) Polypropylene-mesh properties and type of anchoring do not influence strength of parietal ingrowth. *Langenbeck's Arch Surg* 402:1047-1054.
11. Montanaro L, Arciola CR, Cenni E, Ciapetti G, Savioli F, Filippini F, Barsanti LA. Cytotoxicity, blood compatibility and antimicrobial activity of two cyanoacrylate glues for surgical use. *Biomaterials*. 2001 Jan;22(1):59-66.
12. Haghpanah S, Vafafar A, Golzadeh MH, Ardeshiri R, Karimi M. Use of Glubran 2 and Glubran tissue skin adhesive in patients with hereditary bleeding disorders undergoing circumcision and dental extraction. *Ann Hematol*. 2011 Apr;90(4):463-8
13. GEM internal test report 140415: Glutack Lap Shear strength evaluation done with different porous meshes.
14. Garcia-Vallejo L, Couto-Gonzalez I, Concheiro-Coello P, Brea-Garcia B, Taboada-Suarez A. Cyanoacrylate surgical glue for mesh fixation in laparoscopic total extraperitoneal hernia repair. *Surg Laparosc Endosc Percutan Tech*. 2014 Jun; 24(3):240-3.
15. Hosseini SM, Rasekhi AR, Zarenezhad M, Hedjazi A. Cyanoacrylate glue dressing for hypospadias surgery. *N Am J Med Sci*. 2012 Jul;4(7): 320-2.
16. Ahmed E, Lasheen, Adel M. Tolba, Hany Mohamed, Hatem Mohammed, Nadia A. Smaeil. Laparoscopic Inguinal Hernia Repair with Closure of Hernial Defect and Central Mesh Fixation Using Glubran 2. *Surgical Science*, 2013, 4, 554-557.
17. Kull S, Martinelli I, Briganti E, Losi P, Spiller D, Tonlorenzi S, Soldani G. Glubran2 surgical glue: in vitro evaluation of adhesive and mechanical properties. *J Surg Res*. 2009 Nov;157(1):e15-21
18. Karatepe O, Ozturk A, Koculu S, Cagatay A, Kamali G, Aksoy M. To what extent is cyanoacrylate useful to prevent early wound infections in hernia surgery? *Hernia*. 2008 Dec;12(6):603-7.
19. Howell JM, Bresnahan KA, Stair TO, Dhindsa HS, Edwards BA (1995) Comparison of effects of suture and cyanoacrylate tissue adhesive on bacterial counts in contaminated lacerations. *Antimicrob Agents Chemother* 39:559-560
20. Glubran 2 Technical Sheet - IFU Ver 11-2019
21. Reynvoet E, Berrevoet F. Pros and cons of tacking in laparoscopic hernia repair. *Surg Technol Int*. 2014 Nov;25:136-40
22. Villalobos R. et al. Laparoscopic ventral/incisional hernia repair with only glue mesh fixation using a new device: GLULAP experimental study. Poster presentation. Miami AHS-EHS 2018.
23. Koch CA, Greenlee SM, Larson DR, Harrington JR, Farley DR. Randomized prospective study of totally extraperitoneal inguinal hernia repair: fixation versus no fixation of mesh. *JLS*. 2006 Oct-Dec;10(4):457-60.
24. On GEM data file.
25. Dilege E, Devעי U, Erbil Y, Dinççağ A, Seven R, Ozarmagan S, Mercan S, Barbaros U. N-butyl cyanoacrylate versus conventional suturing for fixation of meshes in an incisional hernia model. *J Invest Surg*. 2010 Oct;23(5):262-6.
26. Kukleta JF. Causes of recurrence in laparoscopic inguinal hernia repair. *J Minim Access Surg*. 2006 Sep;2(3):187-91.
27. Agresta F, Baldazzi GA, Ciardo LF, Trentin G, Giuseppe S, Ferrante F, Bedin N. Lightweight partially absorbable monolament mesh (polypropylene/poliglecaprone 25) for TAPP inguinal hernia repair: initial experience. *Surg Laparosc Endosc Percutan Tech*. 2007 Apr;17(2):91-4.
28. Garcia-Pastor P, Torregrosa A, Carvajal N, Garcı́a R, Aı́lvarez E, Blasco R, B-Lledo J, Garcı́a-Granero E. Nebulized cyanoacrylate for prostheses fixation in Rives-type eventroplasty. Usefulness of MRI-visible meshes for safety control. *P-1309- Hernia (2018) 22 (Suppl 1): S94-S189*.
29. Panel P, Soffray F, Roussillon E, Devins C, Brouziyne M, Abramowicz S. Glue mesh fixation: Feasibility, tolerance and complication assessment. Results 24 months after laparoscopic sacrocolpopexy. *J Gynecol Obstet Hum Reprod*. 2017
30. Data on official products catalogues.
31. "A new device for mesh fixation with cyanoacrylate glue in laparoscopic TAPP repair for inguinal hernia" Fantacci R, Cobuccio L, Galatioto C.; Video-Poster presentation, 29° Congresso di Chirurgia dell'Apparato Digerente 28-29 Nov. 2018.
32. Laparoscopic Repair of Ventral Hernia: A new non-traumatic method of Fixation. Nasti G. IV International Medical Film Festival Ryn Poland Ist Polish-French Joint Meeting of Hernia Clubs 22-24 Nov. 2018.
33. Mitura K, Garnysz K, Wyrzykowska D, Michałek I. The change in groin pain perception after transabdominal preperitoneal inguinal hernia repair with glue fixation: a prospective trial of a single surgeon's experience. *Surg Endosc*. 2018 Oct;32(10):4284-4289.

SOLUTION COMES FROM EVOLUTION



Via dei Campi 2 - PO Box 427 - 55049 Viareggio (LU) Italy
Tel. +39 0584 389784/391388 - Fax +39 0584 397904
www.gemitaly.it - info@gemitaly.it

